

# Infinite A-line

## DRESS PATTERN

Sizes Newborn - 8



BONNIE AND BLITHE

# Appropriate Sewing Level

Confident Beginner to Intermediate

If in doubt about your sewing abilities, start with View B.

Once you feel confident with that style, challenge yourself to move on to another view!



## Description

Thank you for purchasing the Infinite A-line Dress Pattern! For years I have dreamed of a little girls' dress pattern with lots and lots of variety. I also wanted to empower my sewing friends with the confidence to create new, unique dress styles without buying a brand new pattern every time.

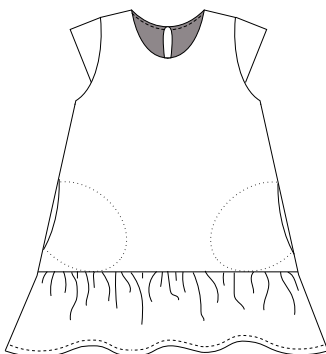
The Infinite A-line Dress is technically 2 patterns in one: a basic A-line silhouette and a fitted bodice with gathered skirt. In addition, it includes an optional skirt ruffle, five sleeve options and two pockets - oodles of mix and match possibilities in one pattern! I created it as a basic dress pattern block you can use to recreate any number of store bought designs that catch your eye. My dream is that this pattern becomes a jumping off point for you and your inner designer. Have fun!

Visit or subscribe to my blog at [bonnieandblithe.com](http://bonnieandblithe.com) for updates on this and other patterns. You can view all tutorials and pattern hacks related the Infinite A-line Dress right [HERE](#) and there's lots more coming!

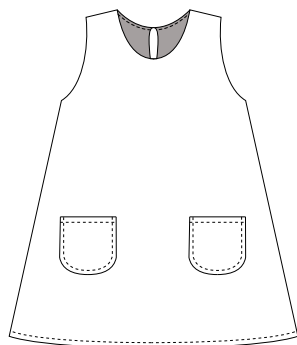
## Dress Variations

The diagrams below represent four basic variations of the Infinite A-line Dress (A & B illustrate the basic A-line silhouette; C & D show the fitted bodice/gathered skirt version) and collectively they include every pattern piece. These will be referenced throughout the instructions according to the letters A, B, C or D.

A



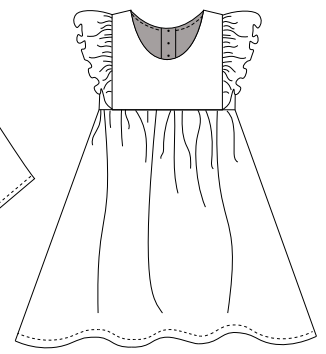
B



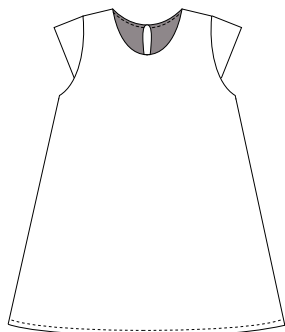
C



D



## How to design your own A-line Dress



You have two basic bodice options when putting together your own design: a basic A-line silhouette or an empire bodice with separate skirt.

For the basic A-line silhouette (such as Views A & B), you will need to cut out pattern piece 1 of your main fabric, as well as your lining fabric. An optional skirt ruffle can be added to this view (such as in View A), just cut your main fabric bodice pieces on the skirt ruffle cut line and use piece 6 for the ruffle. (Do NOT cut the lining on the ruffle cut line, use the full pattern pieces for the lining.)



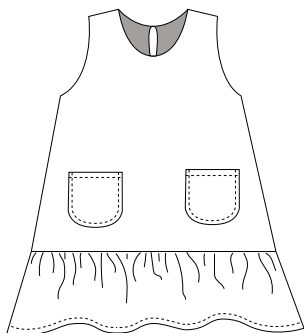
For the empire bodice with ruffles (such as View D), you will cut out pattern piece 2 of your main fabric, plus piece 3 of your lining fabric. You will also need piece 7 for the skirt and piece 6 for the ruffles.

For the basic empire waist option (View C), you will cut out pattern piece 3 of your main fabric, as well as your lining fabric. You will also need piece 7 for the skirt.



An optional skirt ruffle (8) can be added to any dress view. If using bodice piece 1, or the gathered skirt (5) just cut on the skirt ruffle cut line.

Any sleeve option (cap - 4, short or long - 5) can be added to any dress view (including D with the bodice ruffles!) as well. Cut 2 of whichever sleeve pattern piece you choose.



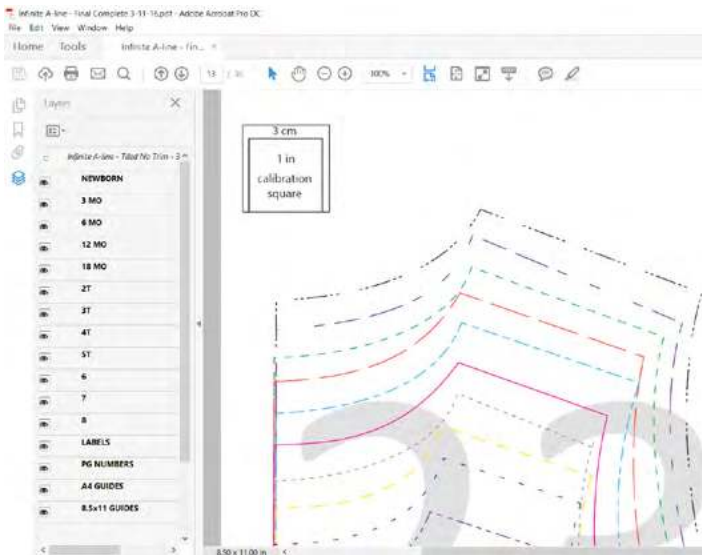
The basic A-line silhouette is designed to be used with a keyhole opening (no pattern piece needed), and the fitted empire bodice is to be used with a partial placket opening (use piece 11). See page 18 for placket instructions. The partial placket opening is suitable for all dress views but the keyhole opening can ONLY be used with a sleeveless or cap sleeved dress, using bodice piece 1. It cannot be used with short or long sleeved dress views or the empire bodice piece as it will not allow enough ease to get over your child's head!

The gathered skirt can also be lined, although not required. You would just need to cut skirt piece (7) out of lining fabric as well.

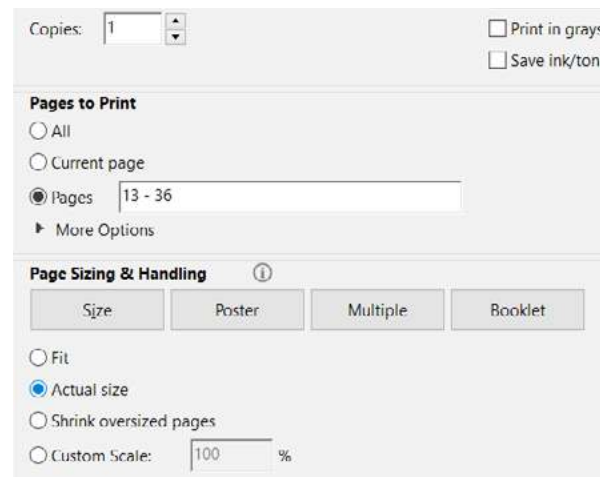
Your pocket options include exterior pockets (piece 9) or seam pockets (piece 10) which can be added to any view.



# Pattern Printing and Piecing Instructions



This pattern is laid out on layered PDF tiles which means that you can choose to print only the size(s) you choose. After opening the pattern in Adobe Reader (not in a browser!), open the “layers” menu on the left (the icon looks like a stack of 3 papers) and then turn each size on or off by clicking the eyeball icon next to each size. The bottom two layers include guides for both 8.5”x11” and A4 sized paper. Be sure to leave on whichever size layer corresponds to the paper you are using.



When you’re ready to print, set your printer settings to NOT scale your pattern pieces. Look for the option to print “Actual Size” or uncheck “Fit to Page”. Before printing out all your pattern pieces, I recommend first printing page 23 and measuring the 1” (3cm) calibration square to ensure that your printer is not scaling the pattern.

Print the pattern pages you need for the dress view you’ve chosen. You will only need to print all of these pages if sewing the largest size (size 8); some of the other smaller sizes will not take up as much room. Be sure to turn on the appropriate layer(s) and scroll through the pattern to avoid printing blank pages.

View A: 21-24, 27-28, 30, 33-35 (pattern pieces 1, 4, 8, 10)

View B: 21-22, 27-28, 33-34 (pattern pieces 1 & 9)

View C: 22-23, 25-26, 28 (long sleeve only), 29, 31-32, 37-38 (pattern pieces 3, 5, 7, 11)

View D: 23, 25-26, 29, 31-32, 35-38 (pieces 2, 3, 6, 7, 11)

If you’d prefer to measure and cut rectangles for your placket (11), skirt (7) and skirt ruffle (8) pieces instead of using the pattern pieces, you can avoid printing these (pgs 23-26, 29-32) unless needed for other pieces. Their measurements are included with the cutting instructions (page 8).

For reference, you can print individual pattern pieces on the following pages:

A-line Dress (1): pgs. 21-22, 27-28, 33-34

Empire Bodice with Ruffle (2): pgs. 36-37

Empire Bodice (3): pgs. 37-38

Cap Sleeve (4): pg. 35

Sleeve (5): pgs. 22 (short), 22 & 28 (long)

Empire Bodice Ruffle (6): pgs. 29, 35

Gathered Skirt (7): pgs. 25-26, 31-32

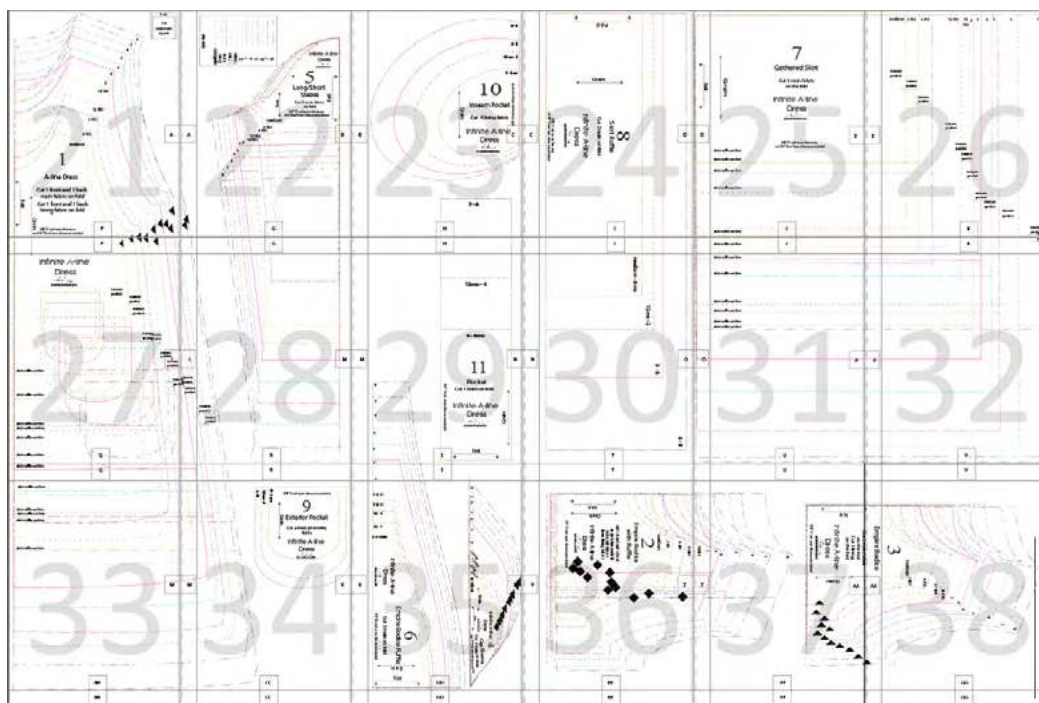
Skirt Ruffle (8): pgs. 24, 30

Exterior Pocket (9): pg. 34

Inseam Pocket (10): pg. 23

Placket (11): pgs. 23 & 29

Once all your pattern pieces are printed, lay them out in numerical order (see diagram below), matching alphabetical rectangles along all 4 sides of each page. Overlap the left edge of each page on top of the right edge of the page next to it (no need to trim edges). Tape pages together in a row and then overlap that row on top of the row underneath it.



## Materials

- Appropriate yardage of main fabric (see chart on page 9)
- Appropriate yardage of lining fabric (see chart on page 10)
- For keyhole opening: 1 in (2.5 cm) elastic cording; 1 coordinating button, any size
- For placket opening: 3-5 coordinating buttons, 3/4" (2cm) diameter or smaller
- 3" x 24" (8 x 61 cm) strip of fusible interfacing
- Matching thread

## Sizing

- Compare your child's chest and height measurements with the chart on page 7 to achieve the best fit.
- Although the size chart is designed to fit an average-sized child of each age, be aware that many children fall between two sizes. If this is the case, choose the size that most closely matches your child's chest measurement. Then, you can easily adjust the length by adding or subtracting a few inches/centimeters to the hem.

## Additional Instructions

**Seam allowances:**  $\frac{3}{8}$ " (1 cm) unless otherwise noted.

**Hem allowances:** Bottom of A-line dress, gathered skirt, ruffle and sleeve hem allowances are  $\frac{5}{8}$ " (2cm).

**Press:** iron seam allowances open **OR** serge/zig-zag edges of seam allowances together and iron to one side

**RST:** right sides together

**Hemming:** Fold raw edge under  $\frac{1}{4}$ " (0.6cm) and press, fold under another  $\frac{1}{2}$ " (1.3cm), press and stitch hem close to upper fold.

**Gather:** Using a long stitch length, sew a line of stitching about  $\frac{1}{4}$ " (0.6cm) from raw edge of fabric, leaving long thread tails. Sew another line of stitching parallel to the first, about  $\frac{1}{4}$ " away, also leaving long tails. Holding the thread tails on one side tightly in one hand, pull the fabric toward the opposite side a little at a time with your other hand, gathering it as you go. If gathering a large amount of fabric (such as the skirt or skirt ruffle), I like to gather in sections, such as along the front piece, and then along the back piece. This helps prevent too much strain on the threads and possible breakage. When you're ready to attach the gathered skirt or ruffle to the dress, do so by stitching *between* the two lines of gathering stitches, then remove the gathering stitch that's visible on the right side of garment.

**Understitching:** Stitching lining to seam allowance on inside of garment (such as along neckline or arm-scye) in order to keep lining from rolling to outside of garment.

**Topstitching:** Stitching along the front edge of a neckline or other seam in order to keep lining and/or seam allowance in place and edge looking crisp.



# Body Measurements

Size	chest circumference	height	upper arm circumference
newborn	16" (41 cm)	25" (64 cm)	5" (13 cm)
3 mo	17" (44 cm)	27" (69 cm)	5.3" (13.5 cm)
6 mo	18.5" (47 cm)	28" (71 cm)	5.5" (14 cm)
12 mo	19.5" (50 cm)	31" (79 cm)	6" (15 cm)
18 mo	20.5" (52 cm)	32" (81 cm)	6" (15.5 cm)
2	21" (54 cm)	33" (84 cm)	6" (15.5 cm)
3	21.5" (55 cm)	36" (92 cm)	6.3" (16 cm)
4	22.5" (57 cm)	39" (100 cm)	6.5" (17 cm)
5	23" (59 cm)	42" (107 cm)	7" (17.5 cm)
6	24" (61 cm)	45" (114 cm)	7" (18 cm)
7	25" (63 cm)	51" (129 cm)	7.5" (19 cm)
8	26" (66 cm)	53" (135 cm)	8" (20 cm)

# Finished Garment Measurements

Size	Chest (dress laid flat)	Length	Short sleeve length	Long sleeve length	empire bodice length
newborn	8.2" (21 cm)	13.5" (35 cm)	2.5" (6.5 cm)	7.5" (19 cm)	4" (10.5 cm)
3 mo	9" (23 cm)	15" (38 cm)	2.7" (7 cm)	8.3" (21 cm)	4.3" (11 cm)
6 mo	9.5" (24.5 cm)	17" (43 cm)	3" (7.5 cm)	9.5" (24 cm)	5" (12.5 cm)
12 mo	10.3" (26 cm)	18" (46 cm)	3" (8 cm)	9.5" (24.5 cm)	5" (13 cm)
18 mo	10.5" (27 cm)	19.5" (50 cm)	3.3" (8.5 cm)	10.5" (27 cm)	6" (15 cm)
2	11" (28 cm)	20.5" (52 cm)	3.5" (9 cm)	11.5" (29 cm)	6.3" (16 cm)
3	11.4" (29 cm)	22" (56 cm)	3.5" (9 cm)	12.3" (31 cm)	6.5" (16.5 cm)
4	11.8" (30 cm)	24" (61 cm)	3.7" (9.5 cm)	13" (33 cm)	7" (17.5 cm)
5	12" (30.7 cm)	26" (66 cm)	4" (10 cm)	13.5" (35 cm)	7.5" (19 cm)
6	12.5" (31.7 cm)	27.5" (70 cm)	4" (10.5 cm)	14.5" (37 cm)	8" (20.5 cm)
7	13" (33 cm)	29" (74 cm)	4.5" (11.5 cm)	15.5" (39 cm)	9" (22.5 cm)
8	13.5" (34.5 cm)	29" (74 cm)	5" (12.5 cm)	16" (41 cm)	9.5" (24 cm)

# Fabric Cutting Instructions

## Recommended Fabrics:

The Infinite A-line Dress can be made from a wide variety of woven fabrics including cotton and cotton blends, rayon, voile, linen, satin, etc. You can even use a stretch knit! Just be sure to size down in the chest and sleeves.

View A: Cut piece 1 (on skirt ruffle cut line) of main fabric; pieces 4, 8, 10 of main fabric; piece 1 (full piece) of lining fabric.

View B: Cut piece 1 of main fabric; piece 9 of main or coordinating fabric; cut 1 of lining fabric.

View C: Cut pieces 3, 5, 7 & 11 of main fabric; cut piece 3 of lining fabric.

View D: Cut pieces 2, 6, 7 & 11 of main fabric; cut piece 3 of lining fabric.

## Measurements for rectangular pattern pieces 7, 8 & 11 (if not printing):

Skirt Ruffle 8 (cut 2)

0 - 6 mo	25.5" x 4" (65 x 11 cm)
12 mo - 2	28" x 5" (72 x 12 cm)
3 - 5	32.5" x 5.5" (83 x 14 cm)
6 - 8	39" x 6" (100 x 16 cm)

Placket 11 (cut 1)

0 - 6 mo	3" x 11.8" (8 x 30 cm)
12 mo - 4	3" x 16.5" (8 x 42 cm)
5 - 8	3" x 23.6" (8 x 60 cm)

Skirt 7 (cut 2)

Size	Skirt	Skirt (minus ruffle)
newborn	19" x 9.5" (49 x 24 cm)	19" x 6" (49 x 16 cm)
3 mo	20" x 10.5" (51 x 27 cm)	20" x 6.5" (51 x 17 cm)
6 mo	21.5" x 11" (55 x 28 cm)	21.5" x 7" (55 x 18 cm)
12 mo	24" x 12.5" (61 x 32 cm)	24" x 8" (61 x 20 cm)
18 mo	24.5" x 14" (63 x 36 cm)	24.5" x 10" (63 x 25 cm)
2	25" x 14.5" (64 x 37 cm)	25" x 10.5" (64 x 27 cm)
3	26" x 15.5" (66 x 40 cm)	26" x 10.5" (66 x 27 cm)
4	26.5" x 17" (68 x 43 cm)	26.5" x 12" (68 x 30 cm)
5	27.5" x 19" (70 x 48 cm)	27.5" x 13.5" (70 x 34 cm)
6	29.5" x 19.5" (75 x 50 cm)	29.5" x 13" (75 x 33 cm)
7	32" x 20.5" (81 x 52 cm)	32" x 14" (81 x 35 cm)
8	32" x 21" (82 x 52 cm)	32" x 14" (82 x 36 cm)



# Yardage Requirements

I've provided the needed amount of fabric for 4 popular variations of the Infinite A-line Dress. Of course, once you begin making your own creations, you'll need to adjust these fabric estimates. Adding a skirt ruffle or lengthening a sleeve, for example, would obviously require more fabric than what is listed below. If you'd like to get the most accurate yardage requirement possible for the dress variation you've chosen, I recommend laying out all the pattern pieces you'll be using on a large table or the floor, as if you're preparing to cut your fabric. Then measure the amount of space that your pieces take up, making sure to account for pieces that will be cut more than once or on the fold.

NOTE: I always try to use my fabric as efficiently as possible so these yardage requirements are very conservative estimates. If you anticipate any fabric shrinkage, need to match patterns or want to play it safe, you might consider buying an additional 1/8 - 1/2 yd (10-45 cm) of fabric.

## Main Fabric

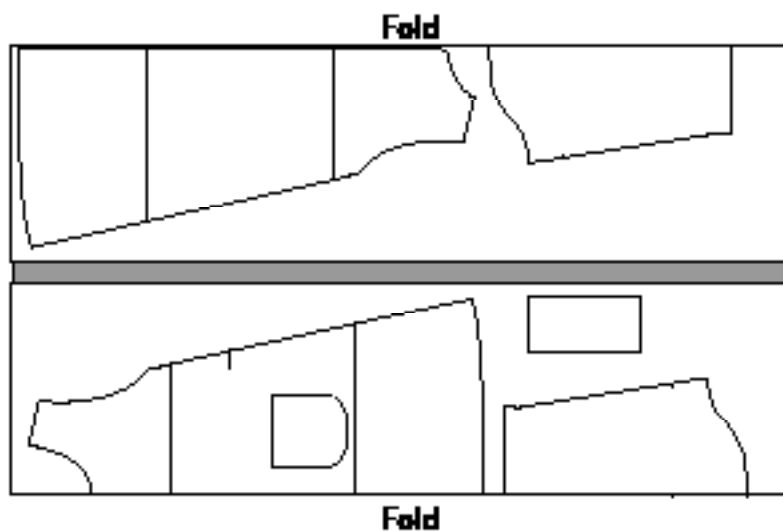
Imperial Size	Imperial Fabric Width	A	B	C	D	Metric Size	Metric Fabric Width
newborn	60/54" 44"	5/8 yd (60 cm) 7/8 yd (80 cm)	5/8 yd (60 cm) 7/8 yd (80 cm)	5/8 yd (60 cm) 7/8 yd (80 cm)	5/8 yd (60 cm) 7/8 yd (80 cm)	newborn	60/54" 44"
3 mo	60/54" 44"	5/8 yd (60 cm) 7/8 yd (80 cm)	5/8 yd (60 cm) 7/8 yd (80 cm)	5/8 yd (60 cm) 7/8 yd (80 cm)	5/8 yd (60 cm) 7/8 yd (80 cm)	3 mo	150/135cm 115cm
6 mo	60/54" 44"	3/4 yd (70 cm) 7/8 yd (80 cm)	3/4 yd (70 cm) 7/8 yd (80 cm)	5/8 yd (60 cm) 7/8 yd (80 cm)	5/8 yd (60 cm) 7/8 yd (80 cm)	6 mo	150/135cm 115cm
12 mo	60/54" 44"	1 yd (90 cm) 1 1/4 yd (120 cm)	5/8 yd (60 cm) 5/8 yd (60 cm)	3/4 yd (70cm) 7/8 yd (80cm)	3/4 yd (70 cm) 3/4 yd (70 cm)	12 mo	150/135cm 115cm
18 mo	60/54" 44"	1 yd (100 cm) 1 3/8 yd (120 cm)	5/8 yd (60 cm) 3/4 yd (70cm)	3/4 yd (70cm) 7/8 yd (80cm)	3/4 yd (70 cm) 3/4 yd (70 cm)	18 mo	150/135cm 115cm
2	60/54" 44"	1 1/4 yd (110 cm) 1 5/8 yd (150 cm)	7/8 yd (80cm) 7/8 yd (80cm)	3/4 yd (70cm) 7/8 yd (80cm)	3/4 yd (70 cm) 3/4 yd (70 cm)	2	150/135cm 115cm
3	60/54" 44"	1 1/4 yd (110 cm) 1 5/8 yd (150 cm)	3/4 yd (60cm) 7/8 yd (80cm)	1 yd (90 cm) 1 yd (90 cm)	3/4 yd (70 cm) 7/8 yd (80cm)	3	150/135cm 115cm
4	60/54" 44"	1 1/2 yd (140 cm) 1 5/8 yd (150 cm)	3/4 yd (70cm) 1 yd (90 cm)	7/8 yd (80cm) 1 yd (90 cm)	7/8 yd (80cm) 1 1/8 (110cm)	4	150/135cm 115cm
5	60/54" 44"	1 1/2 yd (130 cm) 1 3/4 yd (160 cm)	7/8 yd (70cm) 1 yd (100 cm)	1 yd (100 cm) 1 1/8 (100 cm)	1 yd (90 cm) 1 1/4 yd (110 cm)	5	150/135cm 115cm
6	60/54" 44"	1 3/8 yd (130 cm) 1 3/4 yd (150 cm)	1 1/8 (100cm) 1 1/8 (100cm)	1 yd (90 cm) 1 1/4 (110cm)	1 yd (90 cm) 1 1/4 yd (120 cm)	6	150/135cm 115cm
7	60/54" 44"	1 3/8 yd (130 cm) 1 3/4 yd (130 cm)	1 1/8 (110cm) 1 3/4 (160cm)	1 yd (90 cm) 1 1/4 (110cm)	1 1/8 (100cm) 1 3/8 (120cm)	7	150/135cm 115cm
8	60/54" 44"	1 3/4 yd (150 cm) 1 7/8 yd (170 cm)	1 1/4 (110cm) 1 3/4 (160cm)	1 1/4 (110cm) 1 1/2 (140cm)	1 3/8 (130cm) 1 3/4 (150cm)	8	150/135cm 115cm

# Lining Fabric

Imperial Size	Imperial Fabric Width	Lined Empire Bodice Only	Fully Lined Dress	Metric Size	Metric Fabric Width
0-6 mo	60/54" 44"	¼ yd (20 cm) ¼ yd (20 cm)	⅝ yd (50 m) ⅝ yd (50 m)	12 mo	150/135cm 115cm
12 mo -2	60/54" 44"	¼ yd (20 cm) ¼ yd (20 cm)	⅝ yd (60 cm) ⅝ yd (60 cm)	18 mo	150/135cm 115cm
3	60/54" 44"	¼ yd (30 cm) ¼ yd (30 cm)	¾ yd (60 cm) ¾ yd (60 cm)	3	150/135cm 115cm
4	60/54" 44"	¼ yd (30 cm) ¼ yd (30 cm)	¾ yd (70 cm) ¾ yd (70 cm)	4	150/135cm 115cm
5	60/54" 44"	¼ yd (30 cm) ¼ yd (30 cm)	⅞ yd (70 cm) ⅞ yd (70 cm)	5	150/135cm 115cm
6	60/54" 44"	⅜ yd (30 cm) ⅜ yd (30 cm)	⅞ yd (80 cm) 1 ⅝ (150cm)	6	150/135cm 115cm
7	60/54" 44"	⅜ yd (30 cm) ⅜ yd (30 cm)	⅞ yd (80 cm) 1 ¾ (160cm)	7	150/135cm 115cm
8	60/54" 44"	⅜ yd (30 cm) ⅜ yd (30 cm)	⅞ yd (80 cm) 1 ¾ (160cm)	8	150/135cm 115cm



There are a variety of cutting layouts that will work for each dress view. I have found that due to the large number of pattern pieces that need to be cut on the fold, it's often the most efficient to fold the selvages of your fabric in towards the center so that you have two folds to work with. An example is pictured below.



#### TERMS OF USE

All pictures, diagrams, charts and text are the property of Bonnie Wiscombe and the blog Bonnie and Blithe. All rights are reserved. Please do not share the contents of this pattern in any way; copying or emailing this pattern for another person's use is a copyright violation.

You have the right to sell items made from this pattern in a small scale shop such as Etsy, a craft fair or local boutique, simply credit me and include a link to my blog ([bonnieandblithe.com](http://bonnieandblithe.com)).

THANK YOU!

## Basic A-line Dress: A, B (sleeveless or cap sleeves)



1. Stitch dress front (piece 1) to dress back at shoulders, repeat with lining pieces; press.



2. Open up dress and lay flat with right side up; lay lining on top, right side down.

3. Sew dress to lining around neckline; clip curves. Turn right side out and press.

## Cap Sleeves



4. Fold each cap sleeve (piece 4) along fold line, wrong sides together; press.

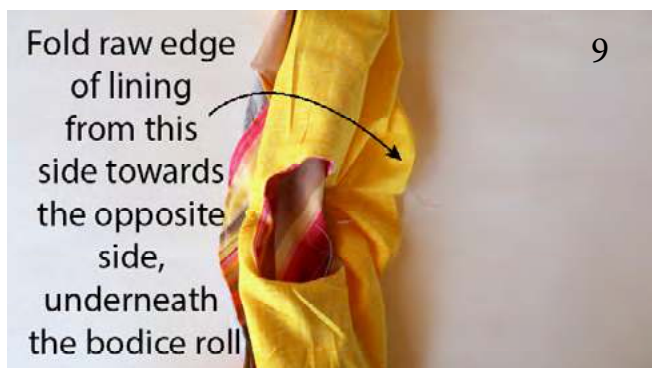
5. Pin sleeves to main dress RST, matching notch to shoulder seam; baste. Repeat with second sleeve.

## Fully Lining Bodice

\*\*You might want to watch [this short video](#) to see steps 6-10 of the following technique demonstrated. At first glance it might seem like a crazy magic trick, but I promise it's simple to replicate once you see it done!

NOTE: this technique will only work with a sleeveless or cap sleeved bodice, such as Views A, B or D.





6. Lay entire bodice flat, right side up.

7. Roll right side of bodice (including cap sleeve or ruffle, if applicable) tightly toward the left.

8. Once you reach the left side with this roll, tuck cap sleeve or ruffle of left side (if applicable) into roll so raw edge of armhole is exposed.

9. Fold raw edge of left bodice armhole around the TOP of this roll and fold raw edge of left lining armhole around the BOTTOM so that they meet up on the right side, sandwiching the roll in between.

10. Pin raw edges of lining and bodice armhole, matching shoulder seams (the rest of bodice is still tightly rolled up inside).



11. Stitch armhole seam, being careful to not catch the sleeve or bodice inside the roll. Clip curves.

12. Pull the bodice out of the roll from either the top or the bottom; press armhole seam.



13. Topstitch close to armhole seam through lining, seam allowance and bodice front, if desired.

14. Repeat steps 1-8 on the other side of bodice.

## Exterior Pockets



15. Place two pocket pieces (9) RST; stitch together using a 1/4" (0.6cm) seam allowance leaving a 2" (5cm) opening. Clip curves and trim seam allowances. Turn pocket right side out and press well.

16. Stitch across width of pocket, about 1" (2.5cm) from top edge.



17. Topstitch each pocket in place on dress front where indicated. Reinforce tops of pockets by sewing a small triangle at each corner. Repeat steps 1-3 with second pocket.

## Inseam Pockets



18

18. Lay one inseam pocket piece (10) on the side edge of front dress or skirt (7) RST, matching top of pocket piece to inseam pocket marking and raw edges together. Be sure that the pocket is angled down towards the bottom of the dress. Pin in place. (Note: the pockets in the picture are placed at the bottom of the dress because this dress is getting a skirt ruffle added to it.)



20

19. Stitch the pocket to the front dress or skirt piece. If adding pockets to gathered skirt without a lining, finish these raw edges with a zig zag or serger.

20. Press pocket and seam allowance away from bodice and understitch seam allowance to pocket, as shown. Repeat steps 1 & 2 with remaining three pocket pieces: on opposite side of bodice front and on both sides of bodice back.

## Side Seams

21. Flip main dress pieces up and away from lining pieces to separate. Match main bodice front to back, RST and lining front to back, RST (matching notches); pin along raw edges. Stitch bodice front to bodice back: beginning at raw hemline, around the front and back pocket pieces if applicable (don't sew pockets closed along seamline!), down the side of the main bodice, across underarm seam and down the side of lining pieces.

22. Turn dress right side out and press side seams.



21

## Skirt Ruffle

23. Sew skirt ruffle pieces (7), RST, along short side seams; you will now have one big circle. Gather along top of front and then back of ruffle.

24. Insert bottom bodice of dress into top of ruffle "circle",





RST, raw edges even. Adjust ruffle gathering to fit bodice; pin in place. Pull pockets out of the way and stitch. Finish raw edges and press seams towards bodice. Topstitch bodice close to seam.

25. Hem dress: turn raw edge under  $\frac{1}{4}$ " (0.6cm) and press, fold under another  $\frac{1}{2}$ " (1.2cm), press and stitch hem close to upper fold. Hem lining with 2" (5cm) seam allowance.

## Keyhole opening

1. Draw a centered line on the back of bodice from the neckline down (consult the following chart to determine length of the line). Make a cut (through the bodice and lining) down the line you just drew.

Size 0 - 6 mo	3" (7.6 cm)
Size 12 mo - 2	4" (10.2 cm)
Size 3 - 8	5" (12.7 cm)

3. Turn bodice inside out and match up bodice to lining along cut; pin.

4. Cut elastic cording to desired length (long enough to stretch around button), plus  $\frac{3}{4}$ " (2cm) for seam allowance.

5. Turn the bodice so the (wrong side) of main fabric is facing you. Fold cording in half and slip fold into the top corner of RIGHT side of bodice, between the lining and main bodice. Keep the raw edges of elastic even with raw edges of bodice, pin securely in place.

6. Stitch around the cut in a "V" shape, creating a point at the end of the stitching (backstitch several times through the elastic). Clip opening close to point of "V", without cutting through the stitching.

7. Turn bodice right side out and press opening. Topstitch around neckline and around keyhole opening. Add button to top right corner of bodice opening (the side without the elastic).

You have now completed the basic A-line dress,  
Views A & B!





# Empire Bodice: C (Short or Long Sleeves)



1. Stitch bodice front (piece 3) to bodice back at shoulders, repeat with lining pieces; press.

2. Lay bodice flat and place RST with lining. Sew around neckline; clip curves.

3. Stitch bodice front to back, RST, at side seams. Repeat with lining. Turn right side out and press neckline and side seams.



## Sleeves

4. Hem sleeves (piece 5) by turning raw edge under  $\frac{1}{8}$ " (3mm) and then under again  $\frac{1}{4}$ " (6mm). Sew a gathering stitch along cap of sleeve, between dots (this does not need to be exact; feel free to gather more or less as desired). Pull bobbin threads to gather.

5. Sew underarm seam by folding sleeve in half lengthwise, RST, and stitching short raw ends together.

6. Baste bodice to lining at armhole. Turn bodice inside out and sleeve right side out. Insert sleeve into bodice at armhole and pin sleeve to bodice, matching side seam to underarm seam and center of cap to shoulder seam. Adjust gathering at sleeve cap to fit armhole. Stitch sleeve in place. Finish armhole seams with a serger or zig-zag stitch.



## Gathered Skirt

7. Sew skirt pieces (7), RST, along short side seams. Gather along front and then along back of skirt.

8. Turn skirt inside out and slide upside down finished bodice into top of skirt as shown so that they are RST (the dress pictured here is View D). Align gathered top of skirt with bottom raw edge of bodice, matching side seams; pin in place. Baste bodice to skirt. Turn dress right side out to ensure gathers are laying nicely and stitch.

9. Finish raw edges and press seam allowance towards bodice. Topstitch along bodice bottom, close to seam.

10. Hem dress: turn raw edge under  $\frac{1}{4}$ " (0.6cm) and press,



fold under another ½” (1.2cm), press and stitch hem close to upper fold. Hem lining with 2” (5cm) seam allowance.

## Placket



12



13A



13B



clip corners

13C



14



16

11. Find the midline of your back bodice and mark ½” (1.3 cm) to the right of this midline. Cut through your main bodice and lining along this mark, from the neckline down to the waistline, and then 3 cm into the skirt.

12. Add fusible interfacing to the wrong side of placket (piece 11). Fold the placket piece in half lengthwise, wrong sides together and press well. Fold placket in half width-wise and mark the center with a pin.

12. Open up the slit you just cut as wide as you can (like a big “V”). Place the placket on top of the bodice, RST, matching center of placket to bottom of “V”, with raw edges even. Pin ONE long side of placket to bodice and leave the top side free (placket will extend past the neckline of bodice on both sides). Baste single thickness placket to bodice.

13. Open up placket top (A) and then fold the short edges of placket backwards (B) so that they envelope the bodice neckline and match each other, RST. Stitch short edges closed, with stitching line just above neckline edge. Trim seam allowance and clip corners (C). Fold short placket right side out; press.

14. Now stitch BOTH thicknesses of placket to bodice. Finish raw edges, press seam allowance toward placket. Topstitch by sewing through placket and seam allowance, close to seamline.

15. Press left half of placket back around to the inside of the bodice, and press right side of placket out, away from bodice.

16. Pin placket closed and turn dress inside out. Stitch placket together, ¼” (0.6cm) from bottom center fold. This keeps the bottom of the opening nice and secure. Topstitch around neckline.

17. Sew buttonholes along the left side of back, through bodice and placket. Sew buttons along right side of placket.

You have now completed the basic empire waist dress, View C!



## Empire Bodice with Ruffles: D

1. Stitch bodice front (2) to bodice back at shoulders, repeat with lining pieces; press. Set lining aside.

2. Cut bodice piece along both cut lines to make one center bodice piece and two armhole bodice pieces (be sure to cut or mark notches where indicated on pattern pieces). You will be using all 3 of these pieces, DO NOT discard any!

3. Hem bodice ruffle (6) along straight edge. Alternately, serge raw edge, turn under  $\frac{1}{4}$ " (0.6cm) and stitch.

4. Fold ruffle in half widthwise and mark center of top (curved) edge of ruffle. Gather entire top edge of ruffle.

5. Lay ruffle along one side of center bodice piece, RST. Adjust ruffle gathering to fit the entire height of the bodice, from the waistline of the front across the shoulder seam, all the way to the waistline of the back; pin in place. Repeat with second ruffle on opposite side of bodice.

6. Baste each ruffle to bodice center.

7. Pin armhole bodice piece (those pieces you cut off in step 2) to center bodice piece along one of the ruffle seams that you just sewed, matching notches. The RIGHT side of your armhole bodice piece will go on the WRONG side of the ruffle.

In other words, you'll have a ruffle "sandwich" consisting of center bodice (right side up), ruffle (right side down), and armhole bodice piece (right side down). Stitch all three pieces together. Repeat with second ruffle.





8. Press ruffle seam allowances towards center and ruffle towards armhole. No need to finish these raw edges as they will be enclosed in the lining.

9. Topstitch along ruffle seam line, stitching through center bodice piece and seam allowance.

10. Open up bodice and lay flat with right side up; lay lining on top of bodice, right side down.

11. Sew bodice to lining around neckline; clip curves. Turn right side out and press.

12. Fully line bodice by following steps 6-14 on [pages 13 & 14](#).

13. Finish skirt and placket by following steps 7-16 on [pages 17-18](#).



You have now completed the empire dress with ruffles, View D!



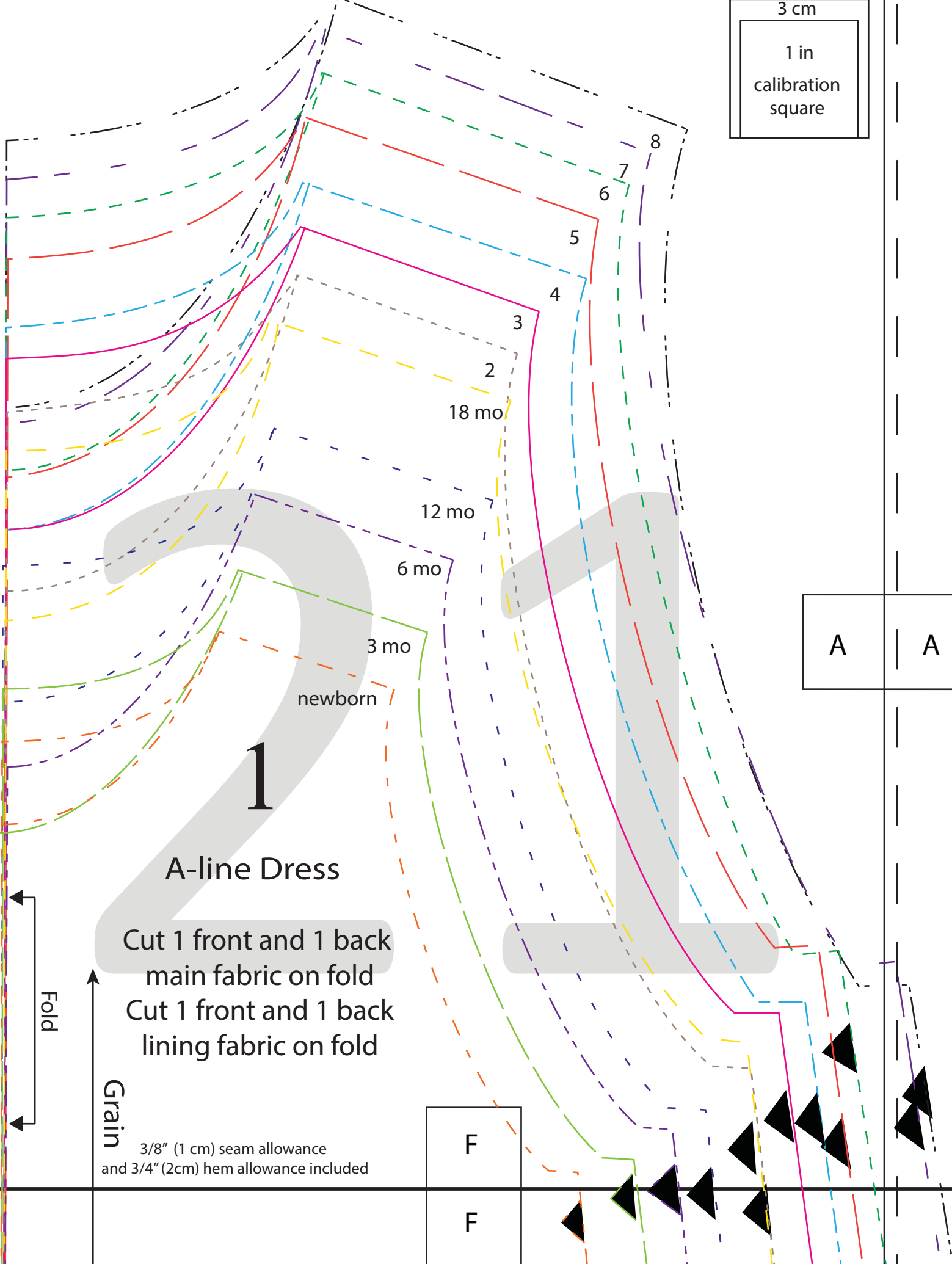
Nice Job!!

Be sure to upload pictures of your dress to our [Facebook Pattern group](#) or share on social media using the hashtag #InfiniteAlineDress.

Check the blog [bonnieandblithe.com](#) regularly and search “Infinite A-line” for more tutorials on how to make this dress truly infinite!



3 cm  
1 in  
calibration  
square



# A-line Dress

Cut 1 front and 1 back  
main fabric on fold  
Cut 1 front and 1 back  
lining fabric on fold

Fold

Grain

3/8" (1 cm) seam allowance  
and 3/4" (2cm) hem allowance included

F  
F

A | A

size key

newborn	3 mo	6 mo	12 mo	18 mo	2	3	4	5	6	7	8
---------	------	------	-------	-------	---	---	---	---	---	---	---

© BONNIE WISCOMBE AND SUE HILL  
© Bonnie Wiscombe 2015

# Infinite A-line Dress

## 5 Long/Short Sleeve

Cut 2 main fabric on fold

3/8" (1 cm) seam allowance  
3/4" (2cm) hem allowance included

Fold

Grain

newborn

3 mo

6 mo

12 mo

18 mo

3

4

5

6

7

8

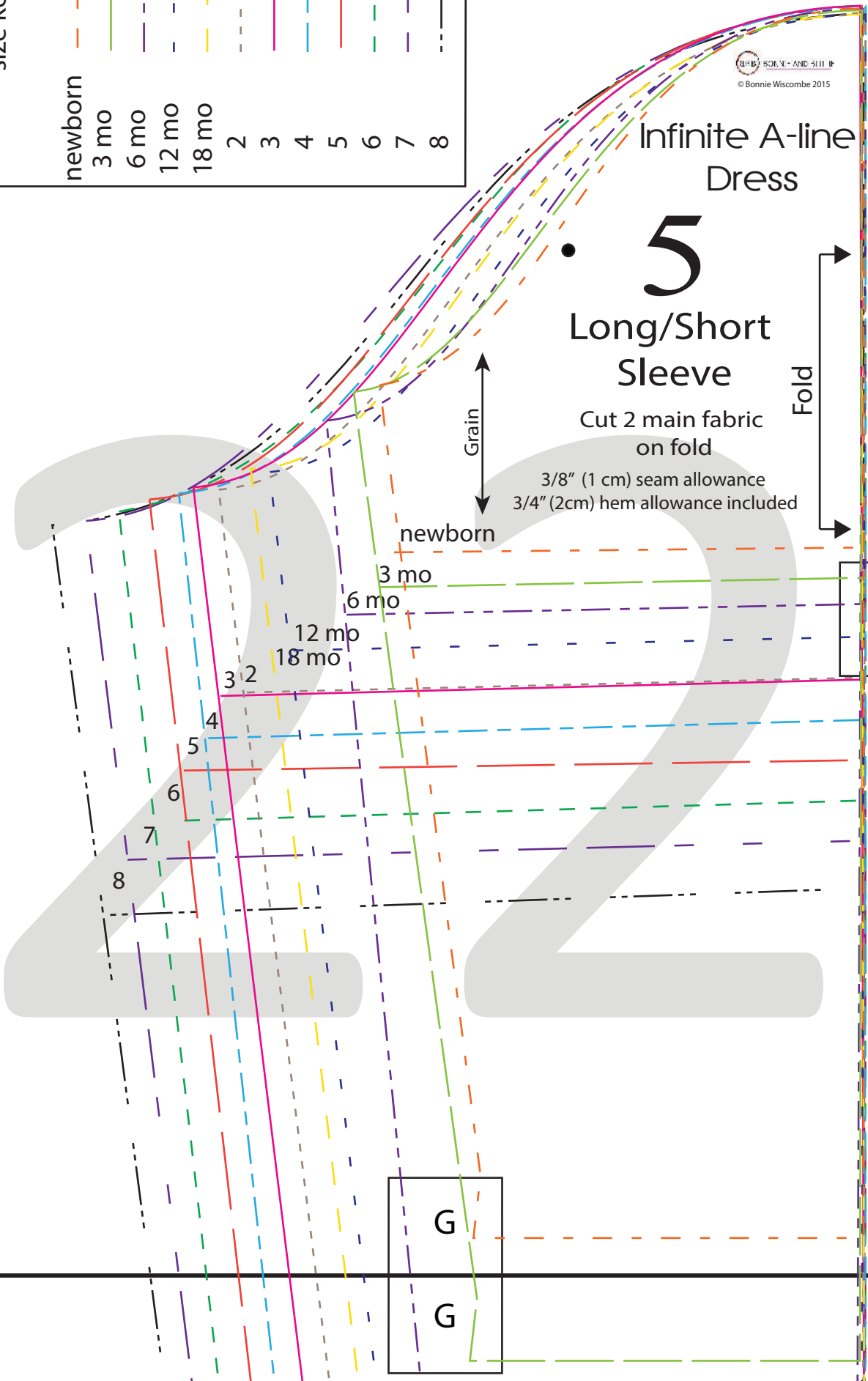
A

B

B

G

G



6-8

3-5

12 mo - 2

0-6 mo

# 10

## Inseam Pocket

Cut 4 lining fabric

## Infinite A-line Dress



BONNIE AND BLITHE  
© Bonnie Wiscombe 2015

Grain

3/8" (1 cm) seam allowance incl'd

B

C

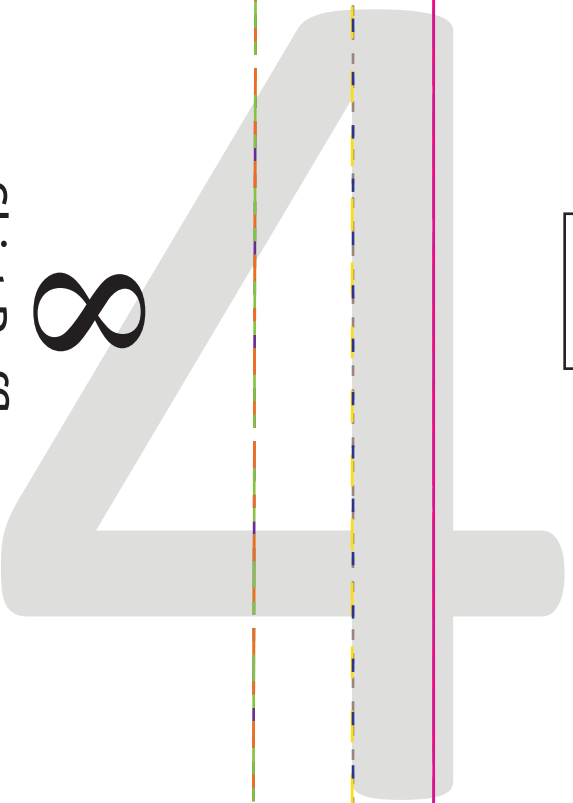
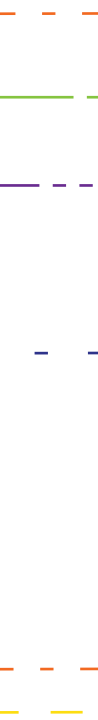
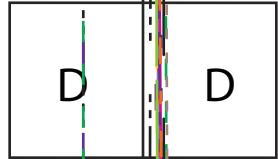
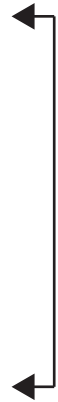
C

5-8

H

H

Fold



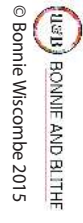
Skirt Ruffle

8

Cut 2 main on fold

Infinite A-line

Dress



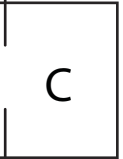
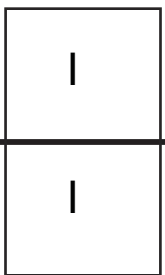
© Bonnie Wiscombe 2015

3/8" (1 cm) seam allowance and 3/4" (2cm) hem allowance included

Grain



Fold





# 7

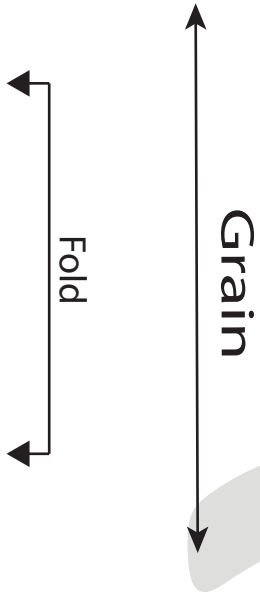
## Gathered Skirt

Cut 2 main fabric  
on the fold

## Infinite A-line Dress

 BONNIE AND BLITHE  
© Bonnie Wiscombe 2015

3/8" (1 cm) seam allowance  
and 3/4" (2cm) hem allowance included



D

E | E

skirt ruffle cut line

skirt ruffle cut line

skirt ruffle cut line

skirt ruffle cut line

skirt ruffle cut line

skirt ruffle cut line

J  
J

newborn

3 mo

6 mo

12 mo

18 mo

2

3

4

5

6

7

8

inseam pocket

inseam pocket

inseam pocket

inseam pocket

inseam pocket

inseam pocket

inseam pocket

inseam pocket

inseam pocket

inseam pocket

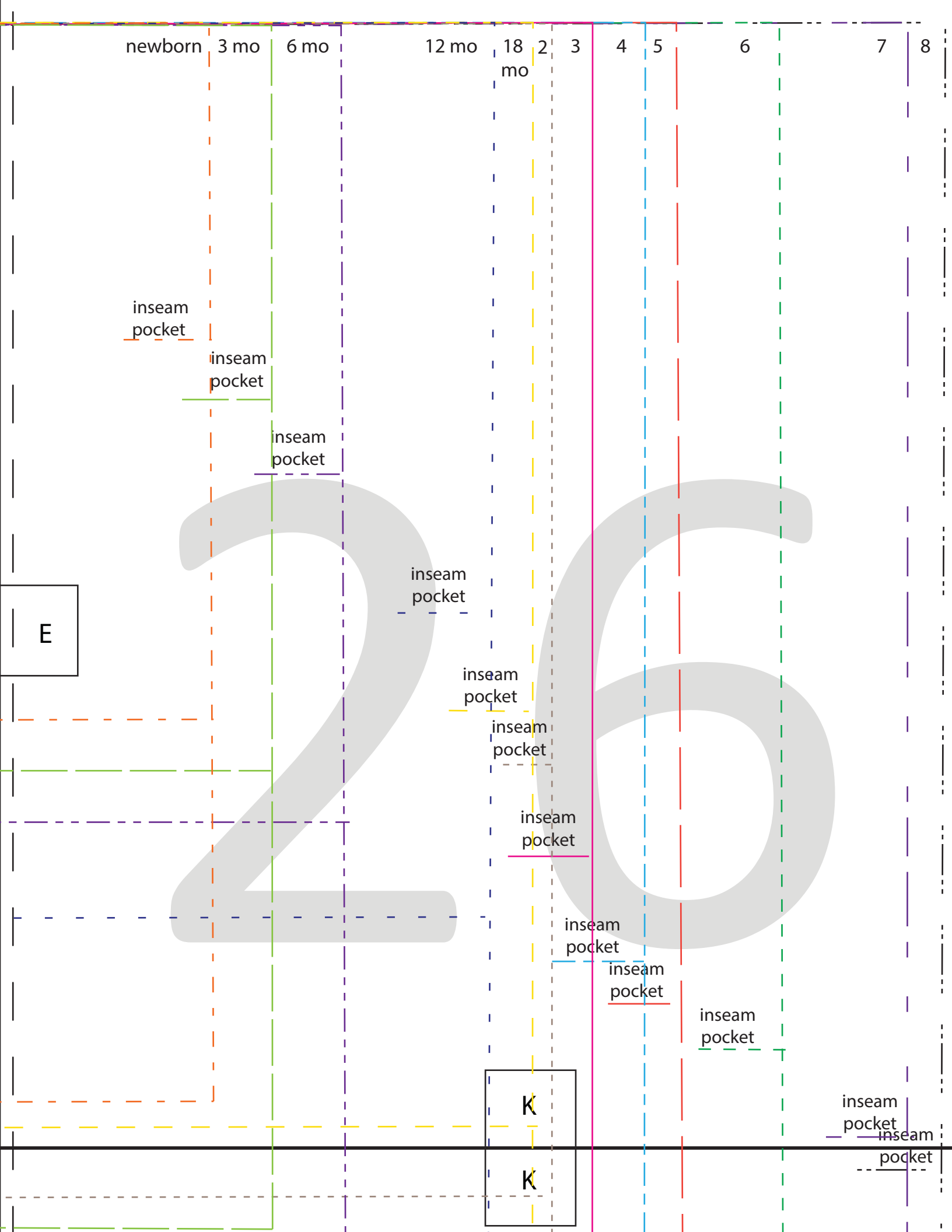
inseam pocket

inseam pocket

E

K

K



F

# Infinite A-line Dress



BONNIE AND BLITHE

© Bonnie Wiscombe 2015

inseam pocket

inseam pocket

inseam pocket

inseam pocket

inseam pocket

inseam pocket

inseam pocket

L

inseam pocket

inseam pocket

inseam pocket

skirt ruffle cut line

skirt ruffle cut line

skirt ruffle cut line

skirt ruffle cut line

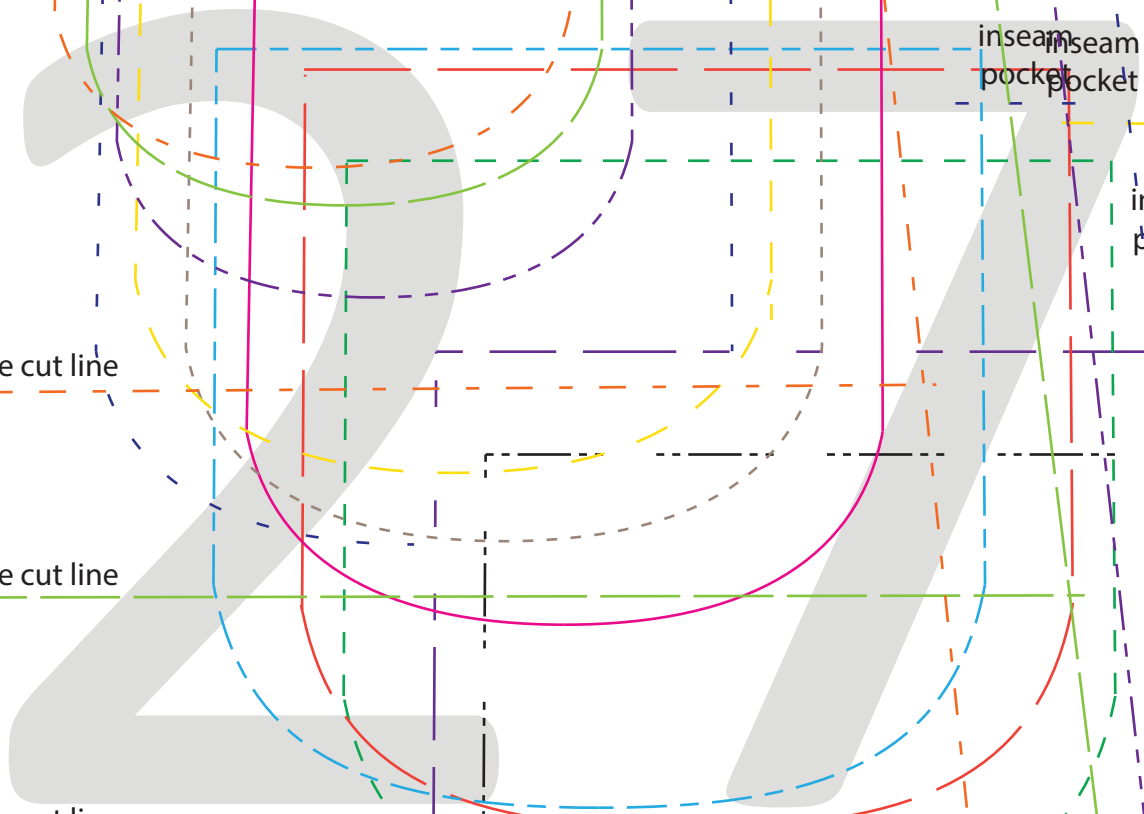
skirt ruffle cut line

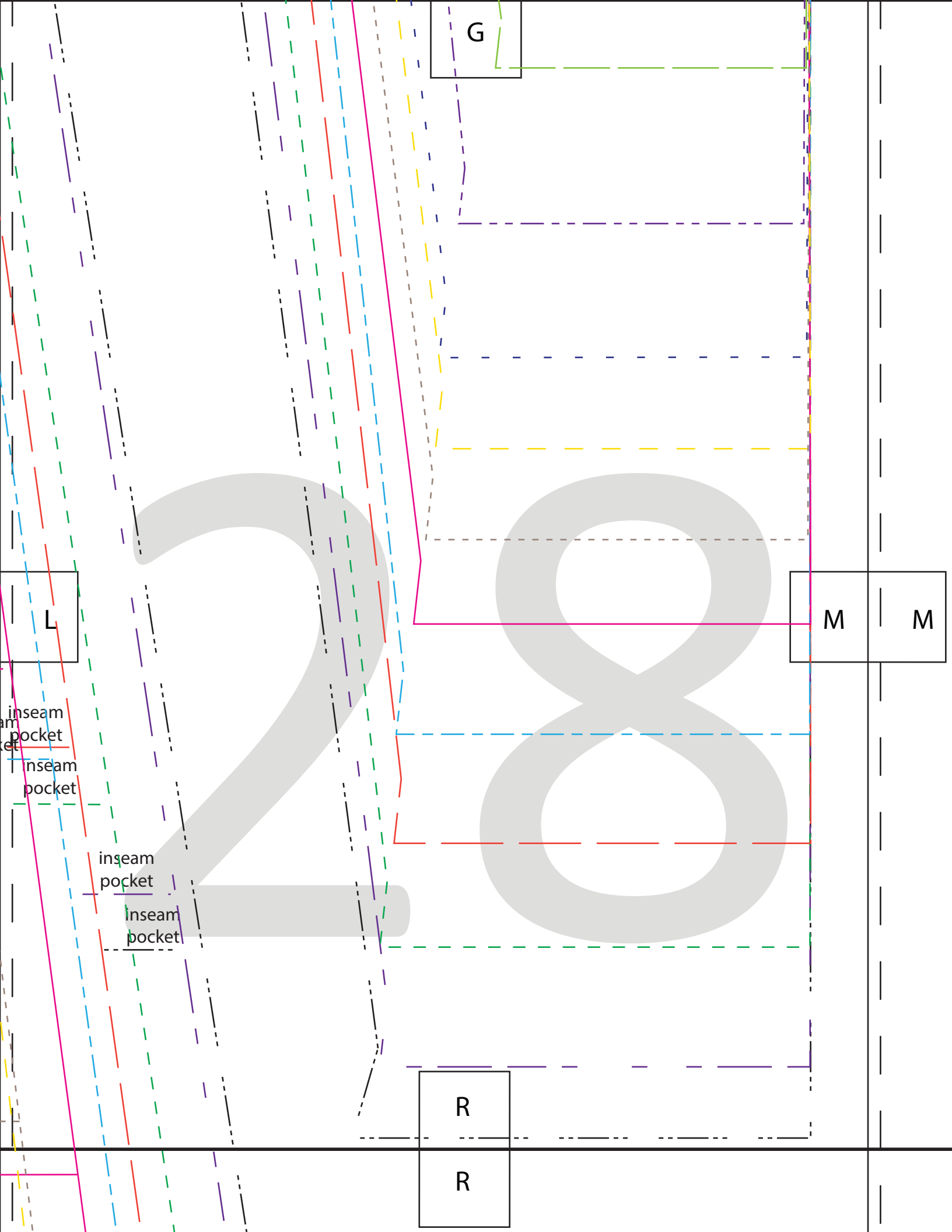
skirt ruffle cut line

skirt ruffle cut line

Q

Q





G

L

M

M

R

R

inseam pocket

inseam pocket

inseam pocket

inseam pocket

H

12mo - 4

0 - 6mo

11

Placket

Cut 1 main on fold

Infinite A-line Dress

3/8" (1 cm) seam allowance included

Grain

BONNIE AND BLITHE  
© Bonnie Wiscombe 2015

Fold

S

S

N

N

M

8

7

6

5

4

3

2

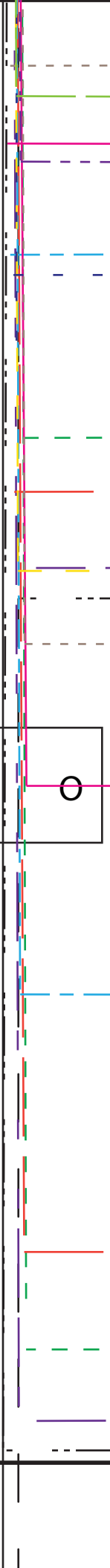
18 mo

12 mo

9 mo

3 mo





O O

6 - 8

3 - 5

12 mo - 2

newborn - 6 mo

I

T T

BO

Z

skirt ruffle cut line

J

skirt ruffle cut line

skirt ruffle cut line

skirt ruffle cut line

skirt ruffle cut line

skirt ruffle cut line

skirt ruffle cut line

3

1

O

P

P

U

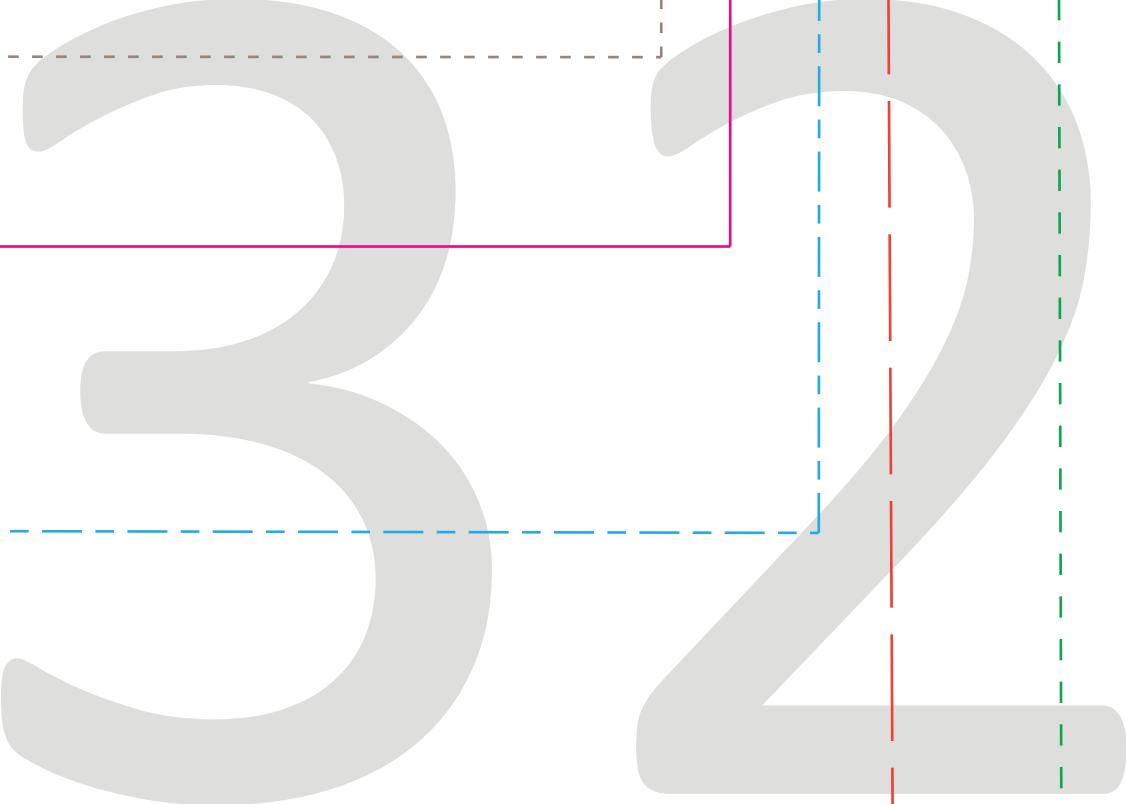
U

K

P

V

V



skirt ruffle cut line

Q

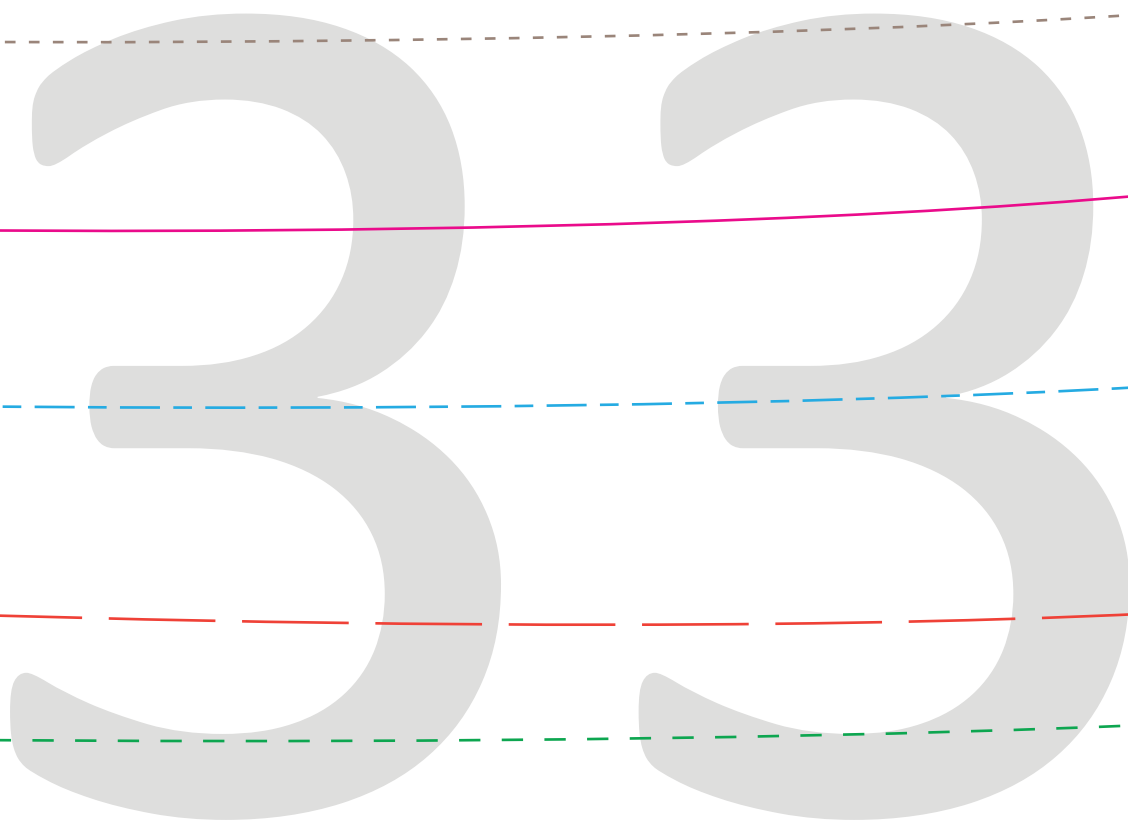
skirt ruffle cut line

skirt ruffle cut line

skirt ruffle cut line

skirt ruffle cut line

skirt ruffle cut line



W

W

BB

BB

R

3/8" (1 cm) seam allowance included

9

# Exterior Pocket

Cut 4 main (or accent) fabric

# Infinite A-line Dress

BONNIE AND BLITHE  
© Bonnie Wiscombe 2015

Grain

0-6 mo

12 mo-3

4-8

W

X

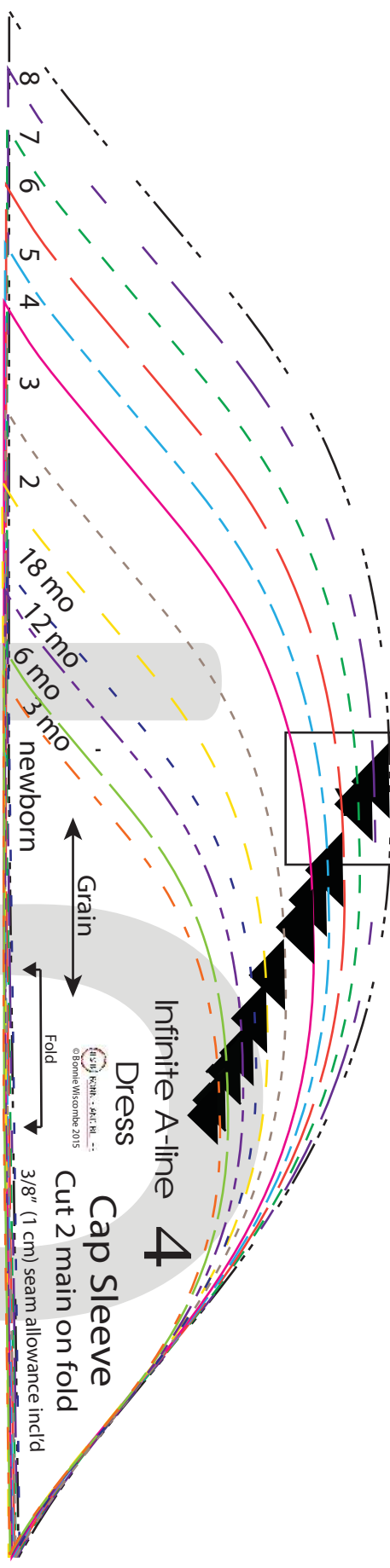
X

CC

CC



Y



S

newborn

Infinite A-line Dress

3/8" (1 cm) seam allowance included

Empire Bodice Ruffle

Cut 2 main on fold

Grain

Fold

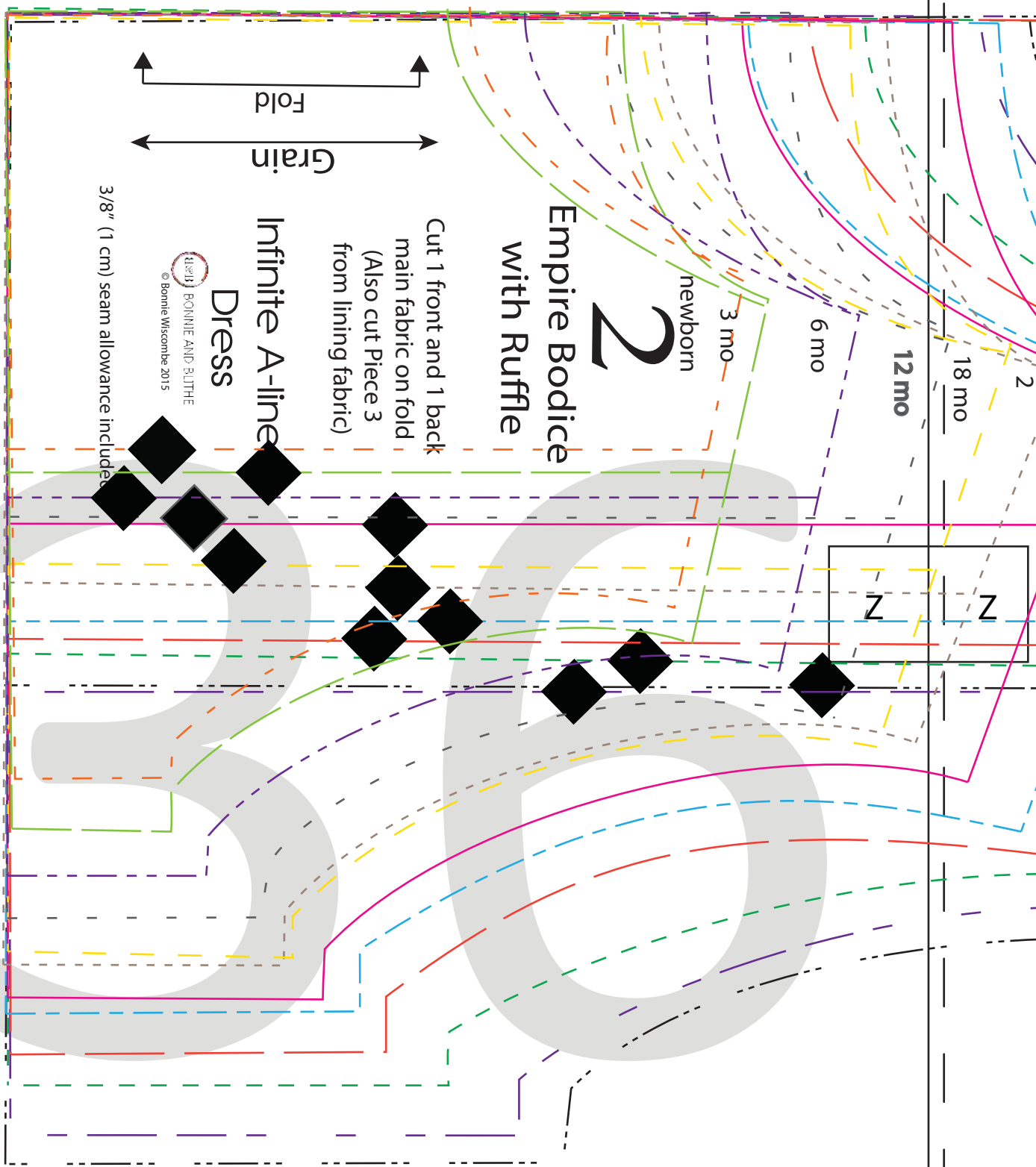
DD

DD

X

R&R30 KNIT, 5-84L, RL, L...  
© Bonnie Wiscombe 2015

T



**Empire Bodice  
with Ruffle**

**2**

Cut 1 front and 1 back  
main fabric on fold  
(Also cut Piece 3  
from lining fabric)

Infinite A-line

**Dress**

**15211** BONNIE AND RUTHIE  
© Bonnie Wiscombe 2015

3/8" (1 cm) seam allowance included

newborn

3 mo

6 mo

12 mo

18 mo

Z

Z

Y

EE

EE

# Empire Bodice

Cut 2 main fabric

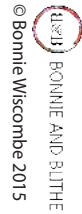
on the fold

Cut 2 lining

on the fold

## Infinite A-line

### Dress



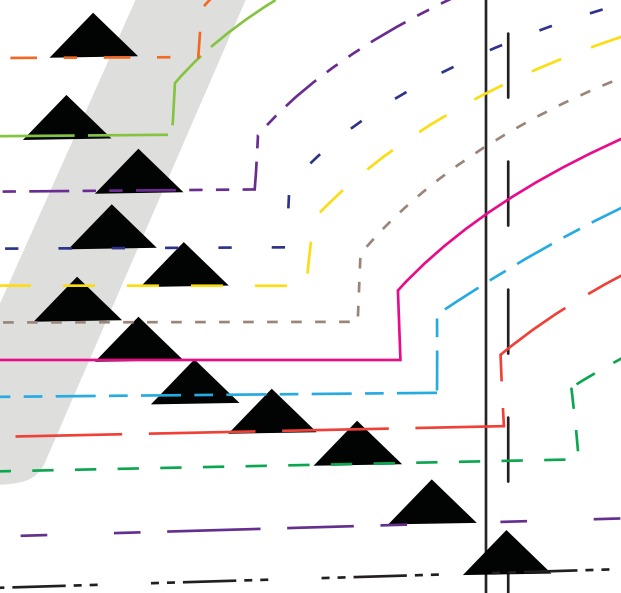
3/8" (1 cm) seam allowance included

Fold

Grain

AA

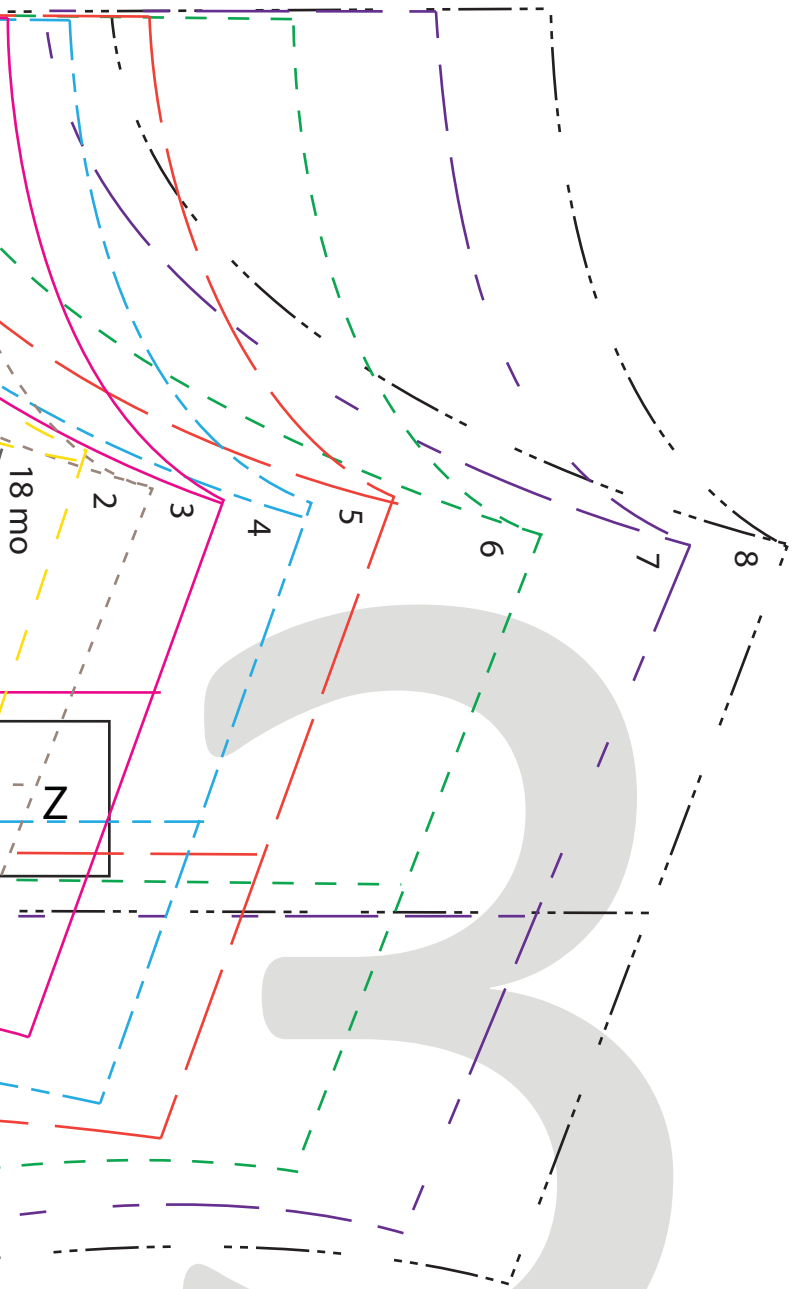
AA



U

FF

FF



Z

18 mo

